

ART.2273



compactFAR

Ultra compact dirt separator for heating plant, provided with magnet for the removal of ferrous particle.

- Pipe connection: 3/4" F - F
- Chromed finish
- Removable cartridge and magnets
- Drain cock
- Patent pending

ART.2274



compactFAR

Ultra compact dirt separator for heating plant, provided with magnet for the removal of ferrous particle.

- Pipe connection : 3/4" F - M
- Chromed finish
- Removable cartridge and magnets
- On/off Ball valve
- Drain cock
- Patent pending

ART.2275



compactFAR

Ultra compact dirt separator for heating plant, provided with magnet for the removal of ferrous particle.

- Pipe connection : 3/4" F - F
- White/Chromed finish
- Removable cartridge and magnets
- Discharge cock
- Patent pending

1 DESCRIPTION

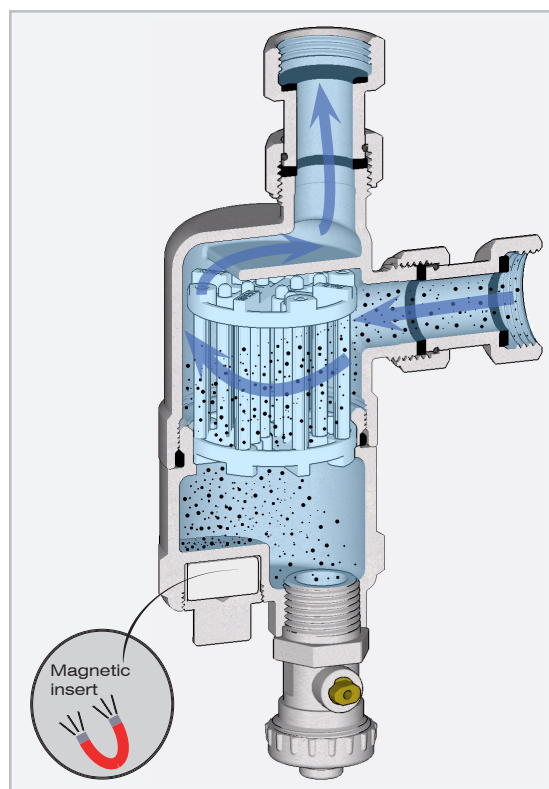
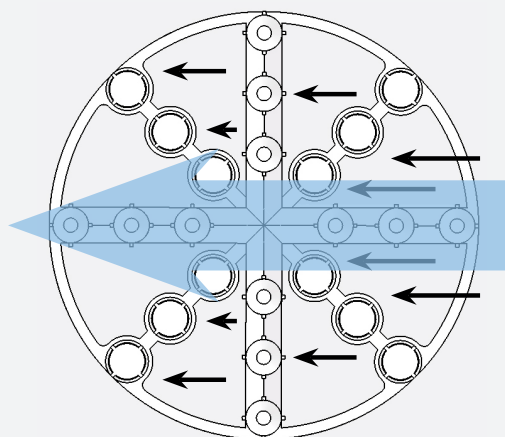
The dirt separator Compactfar is a device designed for the installation on domestic boilers.

Inside of the Compactfar there's a filter cartridge that allows to separate from water all the impurities that are circulating in the pipes and could damage or cause malfunction failures of the boiler. In the down part of the separator there is a magnet that make the Compactfar ideal for the installation on implants in which there is a major quantity of ferrous particles, incrustation or detritus due to corrosion.

2 WORKING PRINCIPLE AND DETAILS

As you can observe from figures, the presence of vertical bars is needed to occupy more space as possible in the same direction fluid goes with the aim of guarantee a frontal impact of the impurity particles with the cartridge. The presence of front flaps allows to generate a small dynamic inversion of the fluid that make the particles precipitate downwards for gravity. The effect is reinforced by the presence of the magnet that permits to remove the small particles, especially in old cooling and heating implants.

Cartridge section which shows the water flow (blue arrow) and the impurities movement (black arrows).



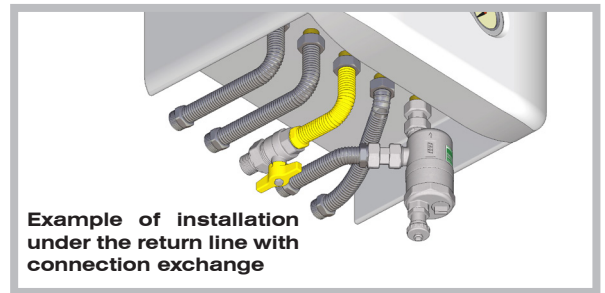
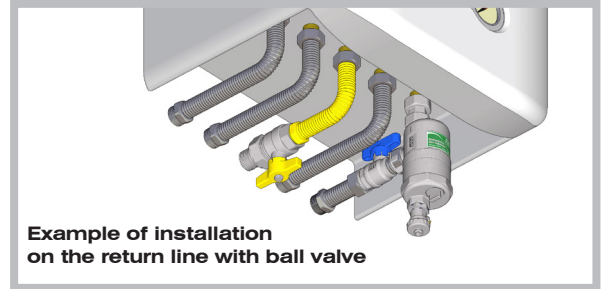
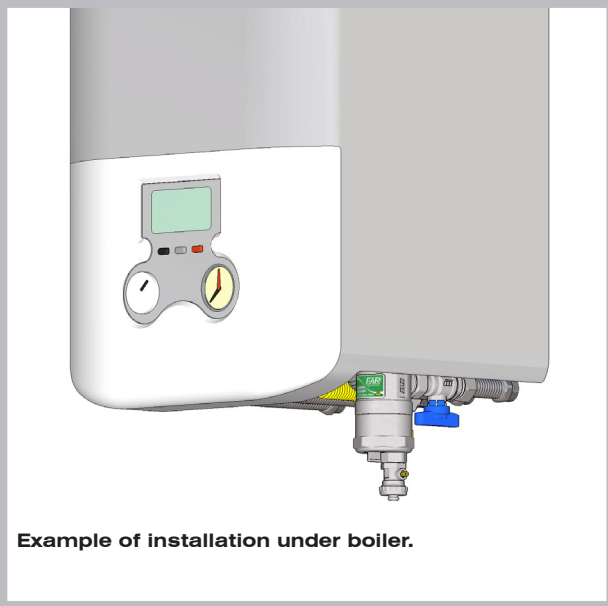
3 INSTALLATION



ATTENTION: Because of the magnetic inserts, anybody fitted with a pacemaker is advised to maintain a safe distance during operation and maintenance. Attention should be paid to the use of electronic equipment near magnetic inserts to avoid interference.

The dirt separator should be placed on the return line before the boiler, in such way as to catch all the impurities that might damage the boiler or the circulator.

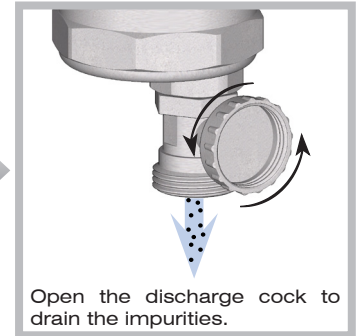
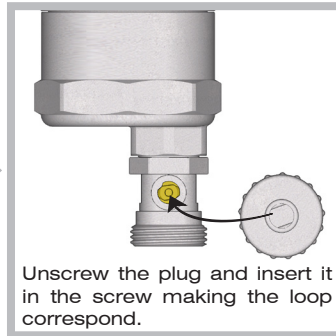
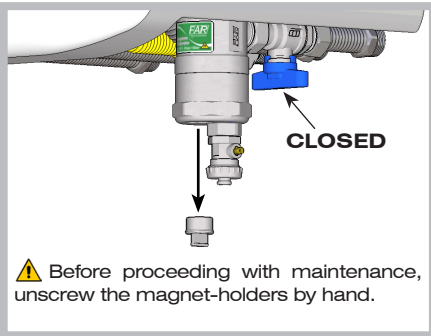
ATTENTION: For proper operation the dirt separator should always be installed in a vertical position.



4 MAINTENANCE

Ordinary maintenance

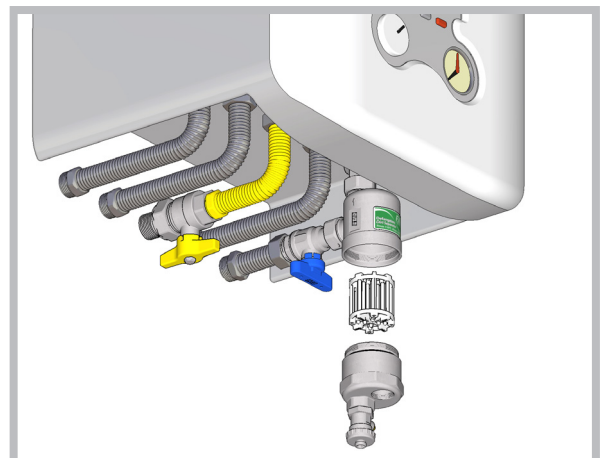
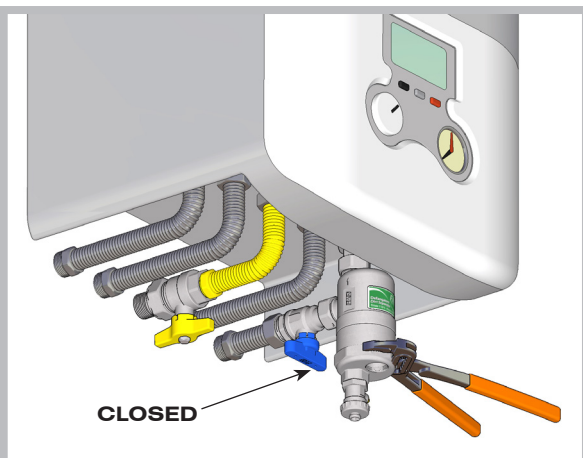
The dirt separator requires periodical maintenance, to remove the deposit impurities.



Extraordinary maintenance

⚠ Before proceeding with maintenance, unscrew the magnet-holders by hand.

Beyond the normal drain procedure, it is possible using a pipe wrench (Plumbing wrench/adjustable wrench) to unscrew the down part of the separator and take the cartridge out to be cleaned from impurities and dirt waste.

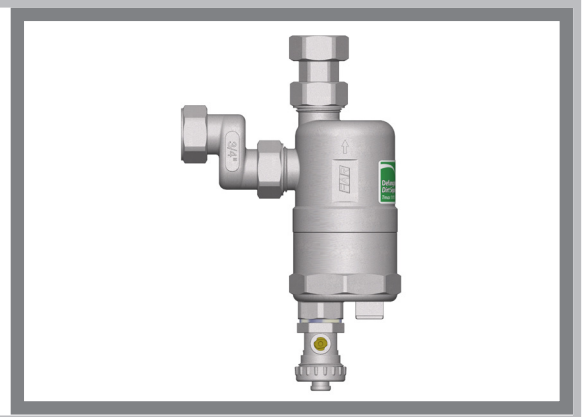
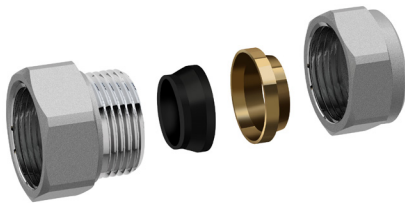


5 ACCESSORIES

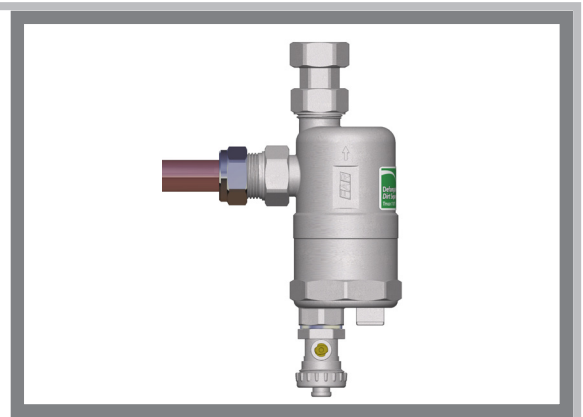
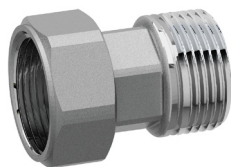
To manage different types of installation, FAR produces a variety of accessories, directly applicable on both connections of the compactfar dirt separator that makes this product compatible with any connection.

Art.5565 234

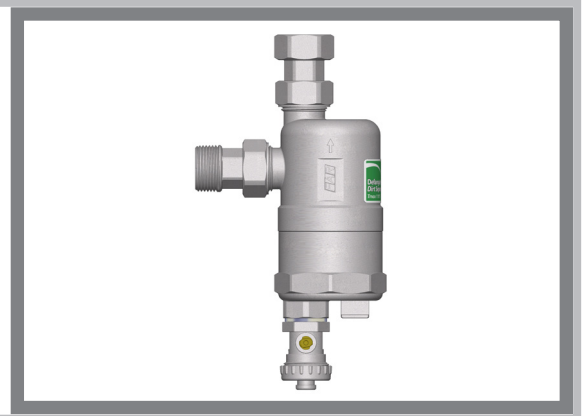
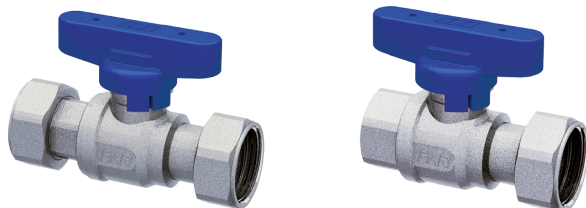

In the case of misalignment between connections and hoses, the eccentric fitting F-F art.5565 234, brass made, 20 mm wheelbase allows to recover this gap for the connection between dirt separator and pipes.


Art.5807 34G18


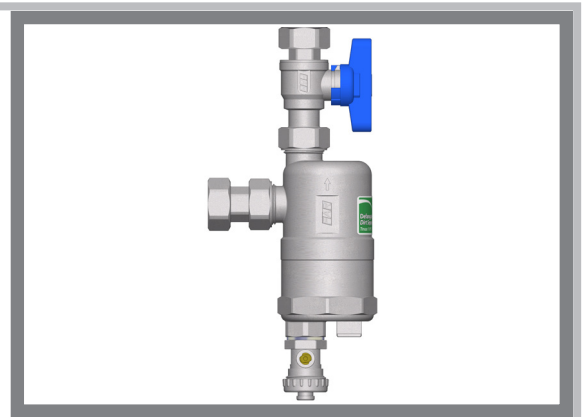
The niplex for 18 copper pipe **art.5807 34G18**, brass chromate provided with rubber seal allows the direct connection between dirt separator and copper pipe.

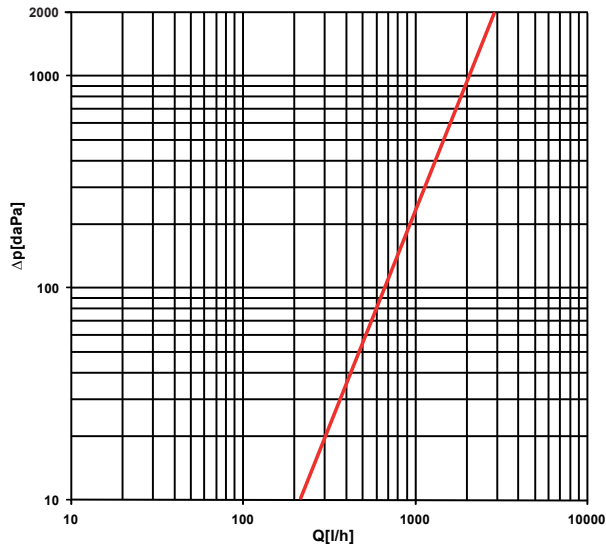

Art.8323 34


The M-F 3/4" junction connection, brass chromate provided with removable cap **art.8323 34** allows the connection with the 3/4" F connection directly at the exit of the return line.

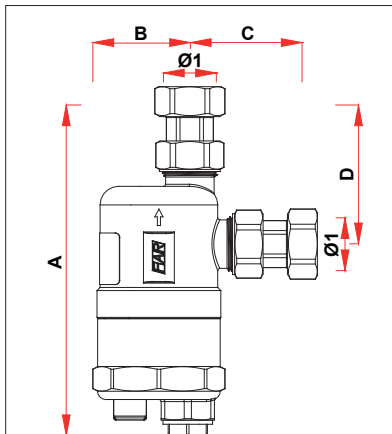

Art.3037C
Art.3047C


The valve **art.3037C** F-F provided with double movable cap and the valve **art.3047C** provided with single movable cap, provide an interceptor device between the dirt separator and the boiler with 3/4" M connection.



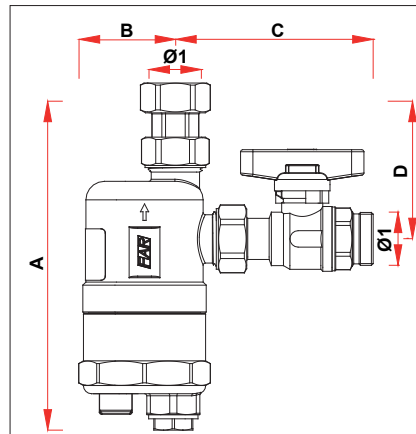
6 FLUID DYNAMIC FEATURES

Kv=6,35 m³/h
7 TECHNICAL SPECIFICATIONS

Body: Brass CB753S
 Drain cock: Brass CW617N
 Max. working temperature: 110°C
 Nominal pressure: 10 bar
 Filtration cartridge: PA6
 O-Ring: EPDM
 Max. flow speed: 1.4 m/s

B DIMENSIONAL FEATURES


* = with drain cock

CODE	Ø1	A	B	C	D
2273 34	G3/4	160 (191*)	47	52	66
2275 34	G3/4	160 (191*)	47	52	66



* = with drain cock

CODE	Ø1	A	B	C	D
2274 34	G3/4	160 (191*)	47	96	66